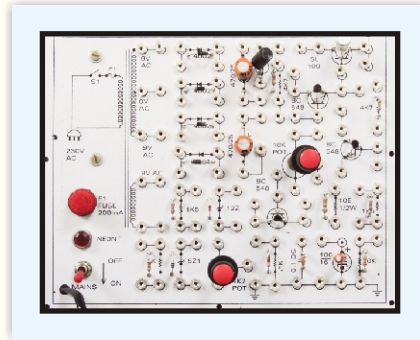




OPAMP AS HALF & FULL WAVE RECTIFIERS TRAINER

MODEL - OPR01

This trainer has been designed with a view to provide practical and experimental knowledge of types of half & full rectifiers.



SPECIFICATIONS

1. Power supply requirement : 230V AC, 50 Hz.
2. Following parts provided on Single PCB with connecting terminals.
 - a. Mains transformer primary 230V A.C.,
Secondary centre tap 18-0-18V AC at 500 mA.
Secondary centre tap 0-10V AC at 500 mA.
 - b. Silicon Junction Diodes - 1N4002 - 4 Nos.
 - c. Filter Choke coil
 - d. Filter Capacitors - 1000u/25V - 2 Nos.
 - e. Zener Diode - 9.1 V - 1 No.
 - f. Load Resistors - 2 No. (1K and 2K2)
3. Standard Accessories :
 1. User Manual with practical and circuit diagrams.
 2. Connecting patch cords - 10 nos.

EXPERIMENTS

1. To study Junction Diode Rectifier output and ripples content for different resistive loads for:
 - (a) Half Wave
 - (b) Full Wave (Centre Tap)
 - (c) Full Wave (Bridge)
 - (d) Voltage Doublers Circuit
2. To study filter and load regulation characteristics for half wave, full wave and Bridge rectifier having Different resistive loads and filters of the types:
 - (a) Capacitor filter
 - (b) Capacitor Filter with capacitor value doubled
 - (c) Inductor filter.
 - (d) Capacitor input L Section filter.
 - (e) Capacitor Input \bar{U} section filter.

In keeping view of SIGMA policy of continuous development and improvement, the Specifications may be changed without prior notice or obligation.

Sigma Trainers
E-103, Jai Ambe Nagar,
Near Udgam School, Thaltej,
AHMEDABAD - 380054.

Phone : 079-26852427 / 26767512
Fax : 079-26840290 / 26759661
ISDN : 079-26859162 / 26853758
Email : sales@sigmatrainers.com
: sigmatrainers@sify.com
Web : www.sigmatrainers.com

Dealer:-